

Installation Guide

BioTime 8.0

Version: 2.0

Date: November 2019

Software: 8.0.2 or above

System Requirements

Specifications

| | |
|-----------------|---|
| Windows | (64-bit only) Windows 7/ 8/ 8.1/ 10 (64-bit only) Windows Server 2008/ 2008R2/2012/ 2012R2/2014/ 2016/2019 |
| Memory | 4GB available or above |
| CPU | Dual core processor with speed of 2.4GHz or faster |
| Hard Disk Space | Available space of 100G or above. (We recommend using NTFS hard disk partition as the software installation directory.) |

Database

- PostgreSQL (Default)
- MS SQL 2005/2008/2012/2014/2016/2017
- MySQL 5.0/ 5.6/ 5.7
- Oracle 10g/11g/12c

Suggested Browsers

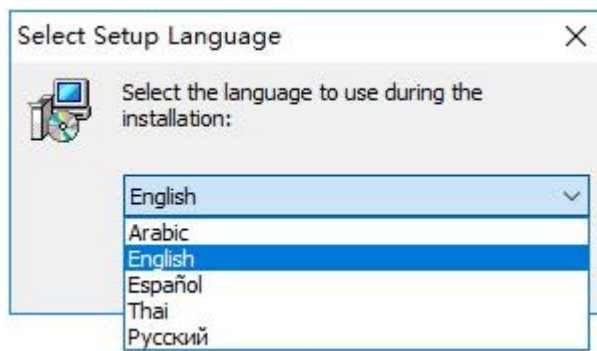
- Chrome 33+
- IE 11+
- Firefox 27+

Installing BioTime 8.0 Software

1. Right click *setup.exe* and run the installation setup as an administrator.

| Name | Date modified | Type | Size |
|---------|-------------------|-------------|--------|
| BioTime | 2/21/2019 2:36 PM | File folder | |
| setup | 2/18/2019 4:18 PM | Application | 895 KB |

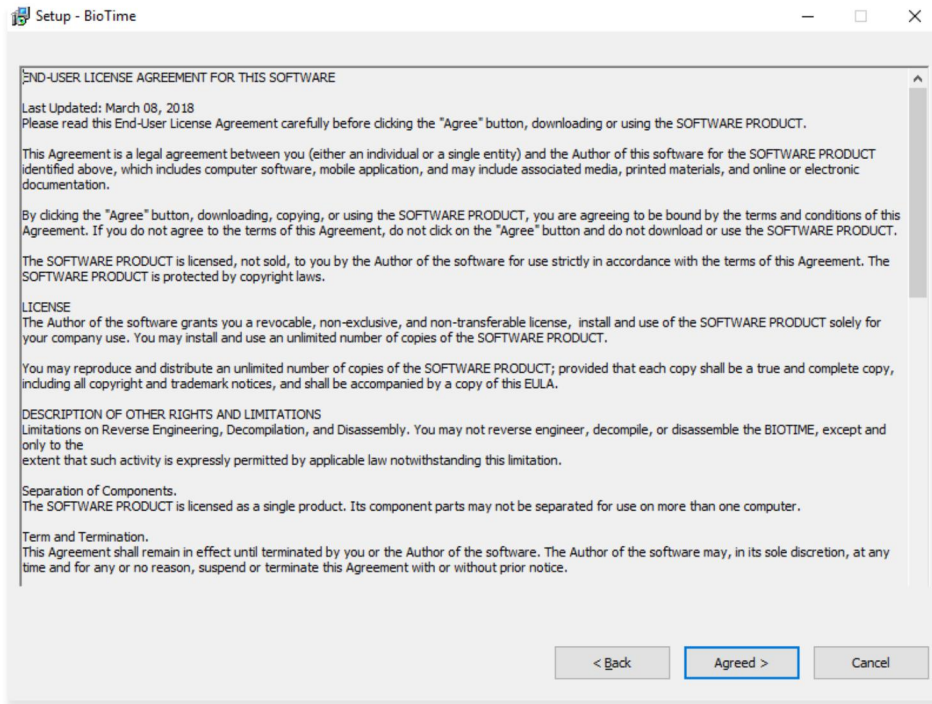
2. Select the setup language from the drop-down list.



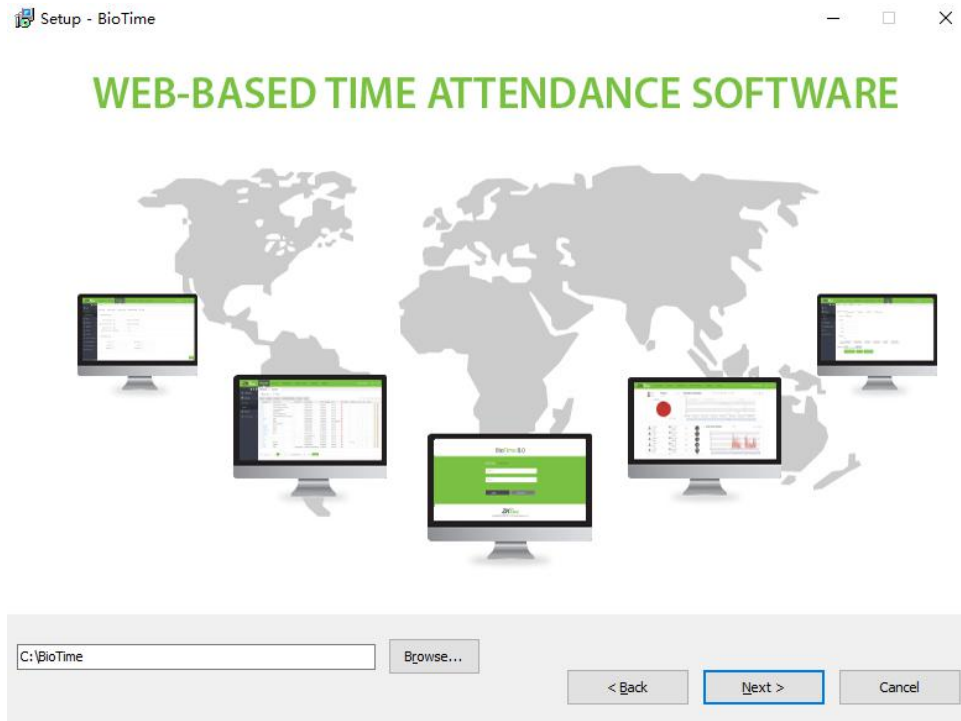
3. Click *Start* to start the installation process.



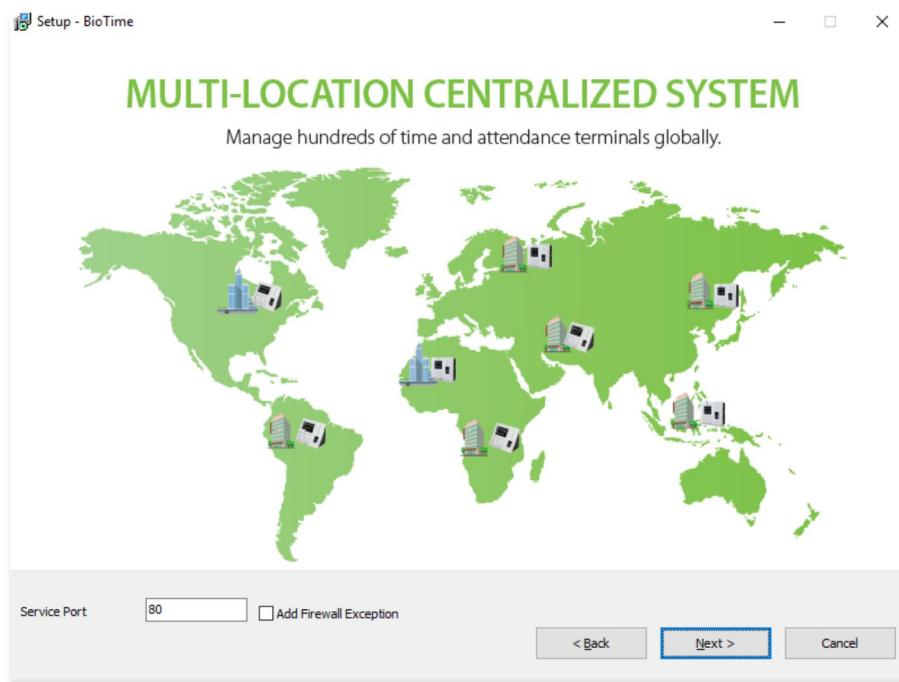
4. Read carefully the License Agreement and click *Agreed* if you agree on the license terms and conditions and *Back* if not.



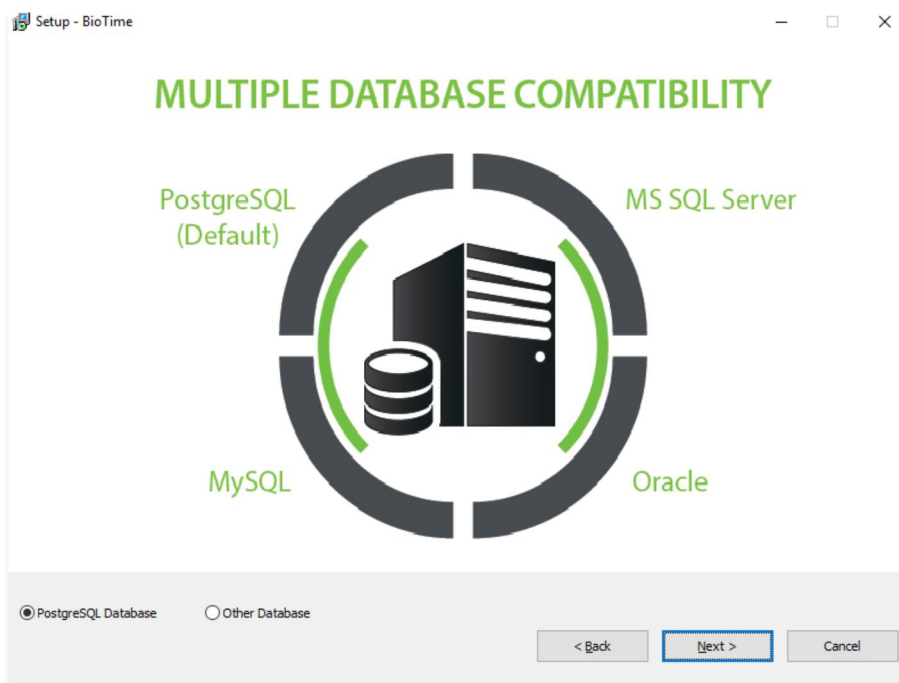
5. Select the installation file folder and click *Next*.



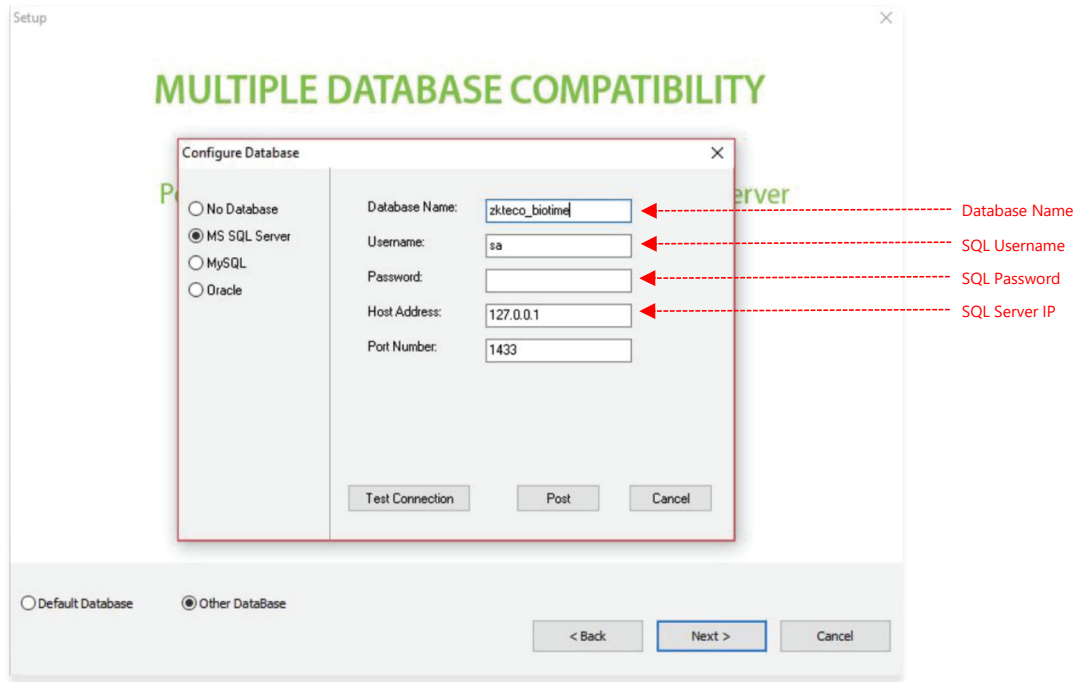
6. Set the port number and tick *Add Firewall Exception*.



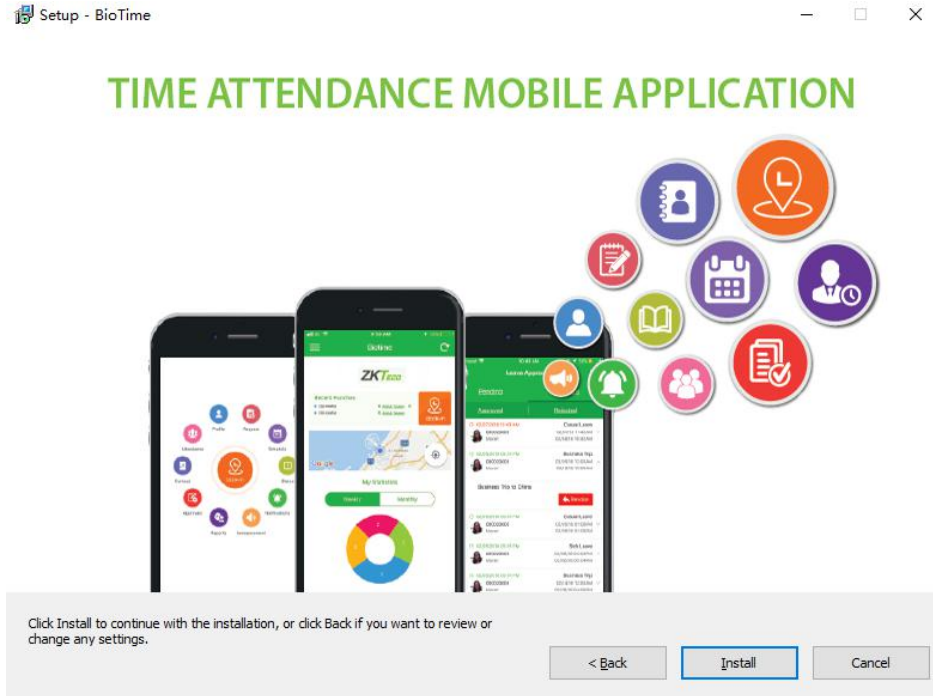
7. Choose **Default Database** to install the software in the default database PostgreSQL. You can also configure the database after installation in the BioTime Platform Service Console.



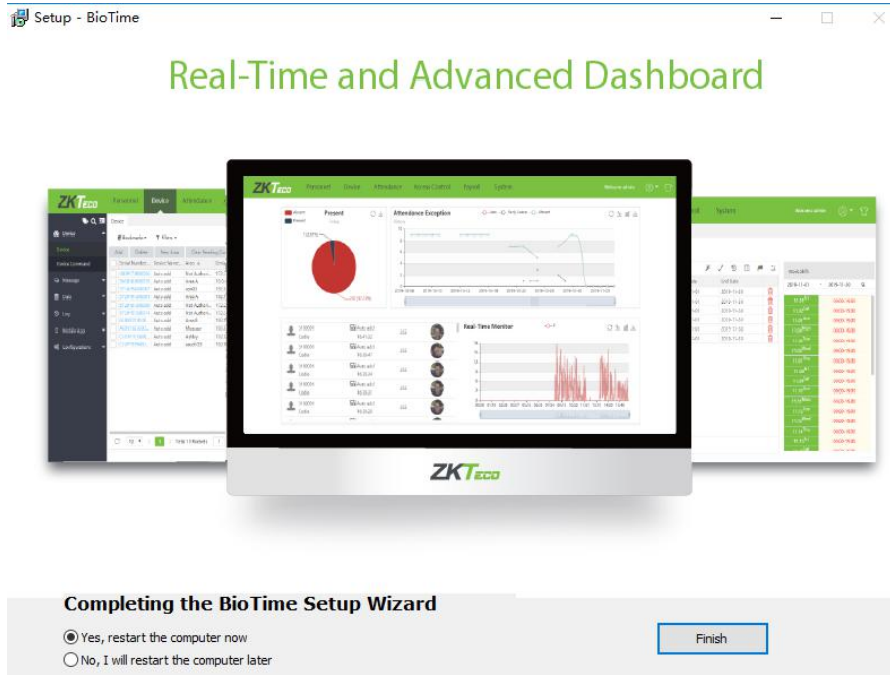
If you choose to configure the database in the installation process, click **Other Database** and choose which type of database you will use. Fill in the details accordingly.



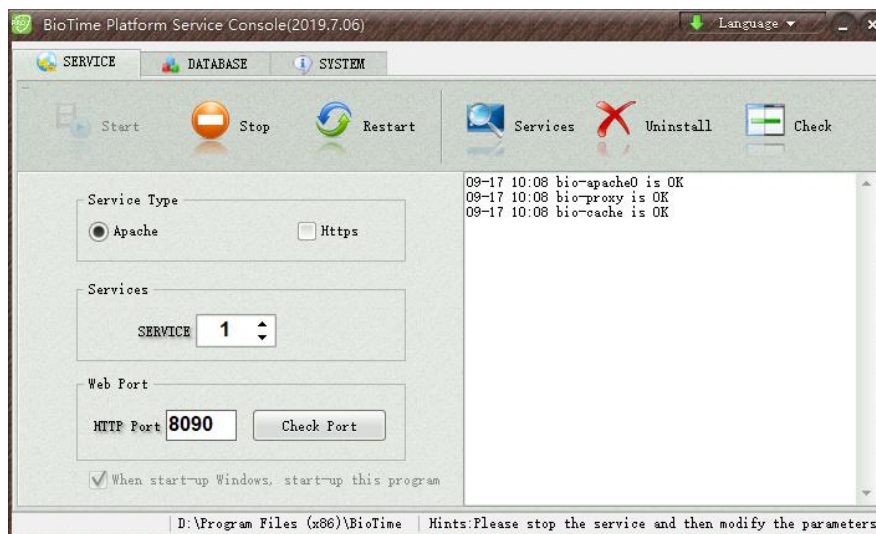
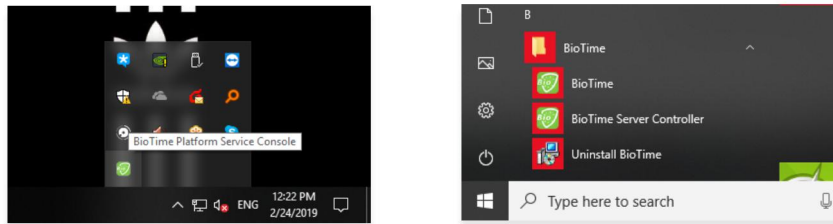
8. Click *Install*.



9. Complete the installation process by restarting the computer.



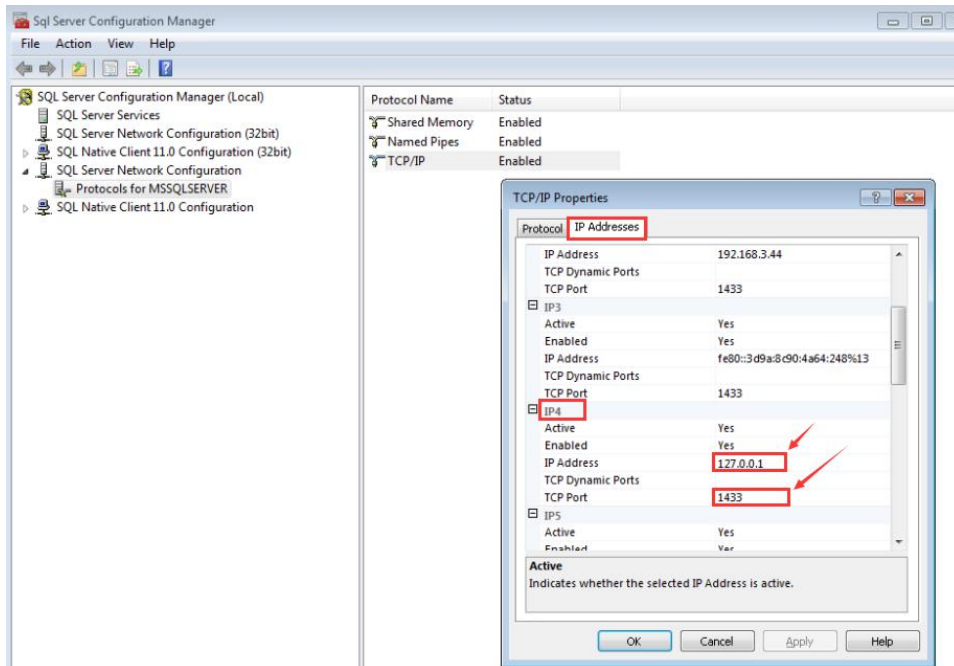
After the installation, run the *BioTime Platform Service Console* which you can find in your taskbar or in the Start menu. Then click *Start* under *Service* tab.



SQL Server Configuration with BioTime 8.0

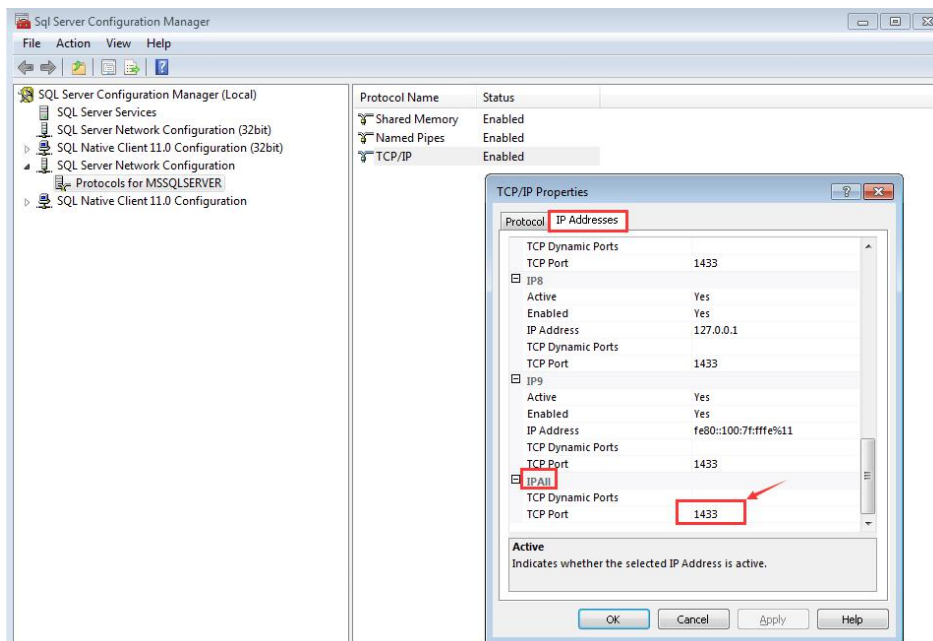
When you install MS SQL Server, choose Mixed Mode Authentication.

Start → SQL Server Configuration Manager → Protocols for MS SQL Server
 Right click on TCP/IP → Enable TCP/IP



IP Address → IPAll

In "IPAll" configuration, empty the values in the 'TCP Dynamic Ports' and type 1433 in the TCP Port.



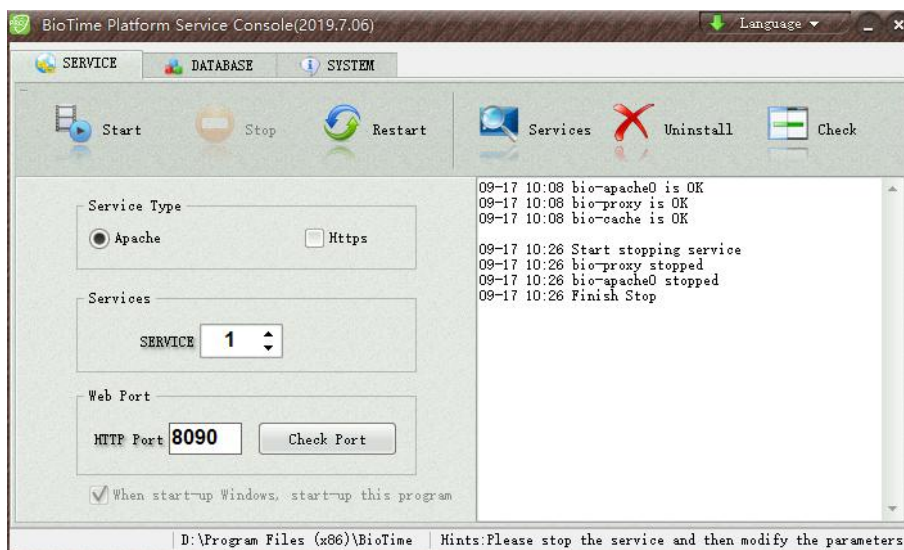
Click OK then restart the SQL services.

BioTime 8.0 Configuration


Open the BioTime Platform Service Console.

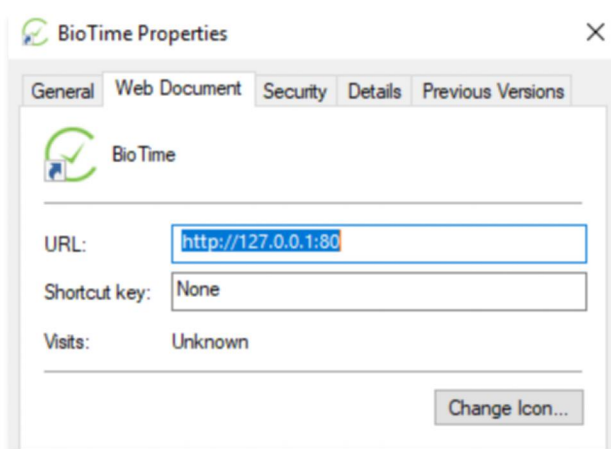
Server Port Configuration

1. Under the **Service** tab, click **Stop** to stop the services then fill in the port number. Click **Check Port** to see if the port number is available. Then click **Start** to start the services again.



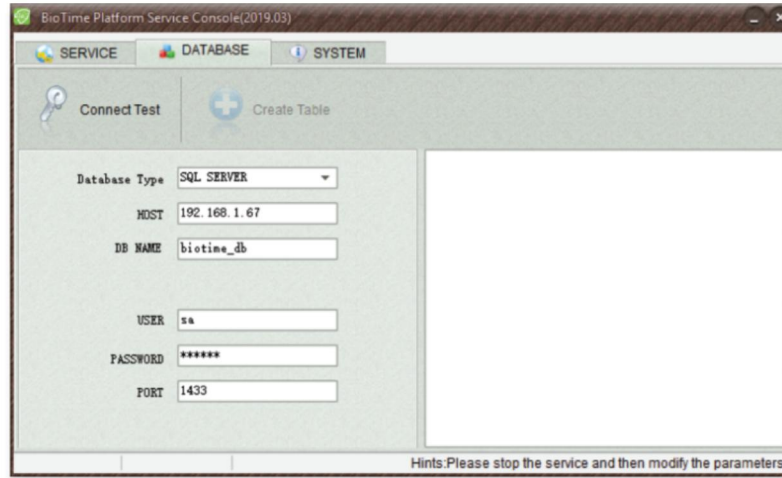
Note:

- I. "Port Unavailable" means that this port is occupied. Please set another port and re-test.
- II. When the port number is modified, right click the BioTime icon  on the desktop and enter the Properties to change its URL.

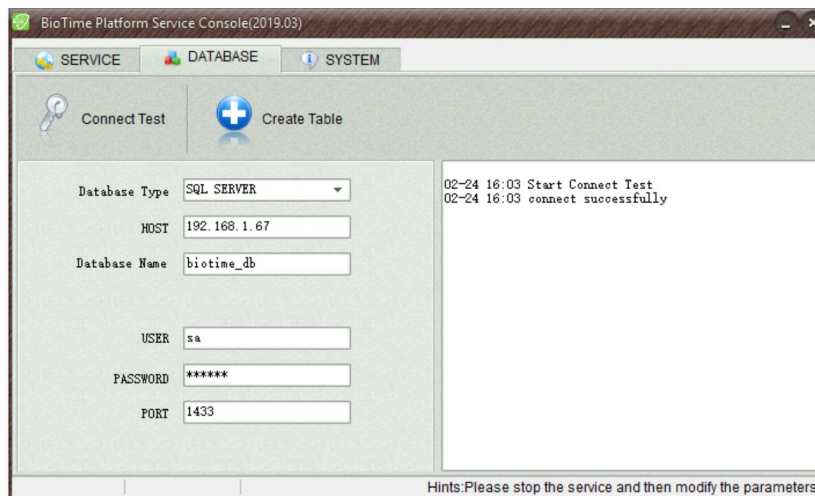
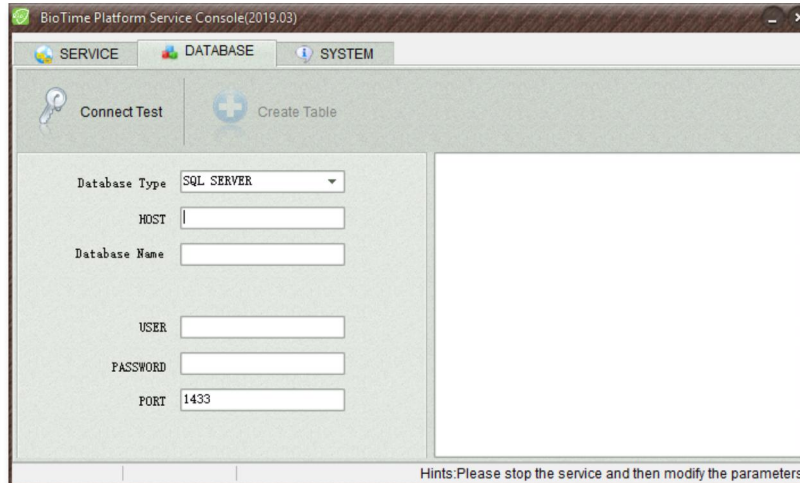


Database Configuration

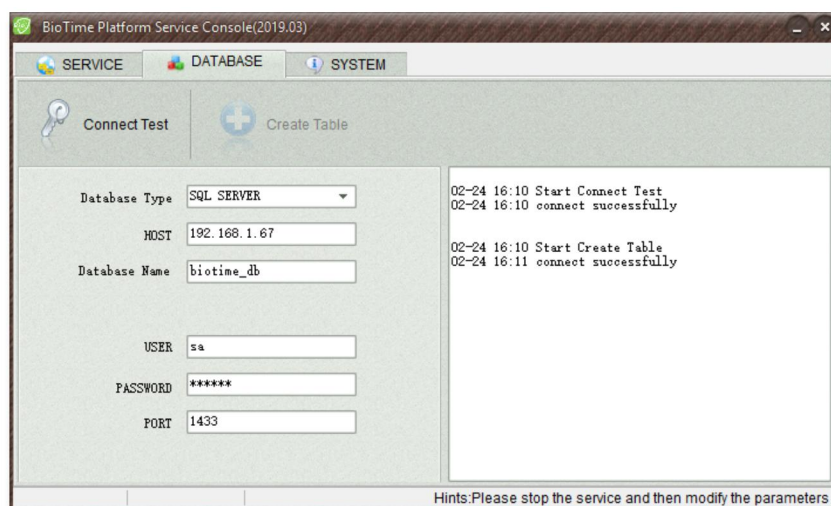
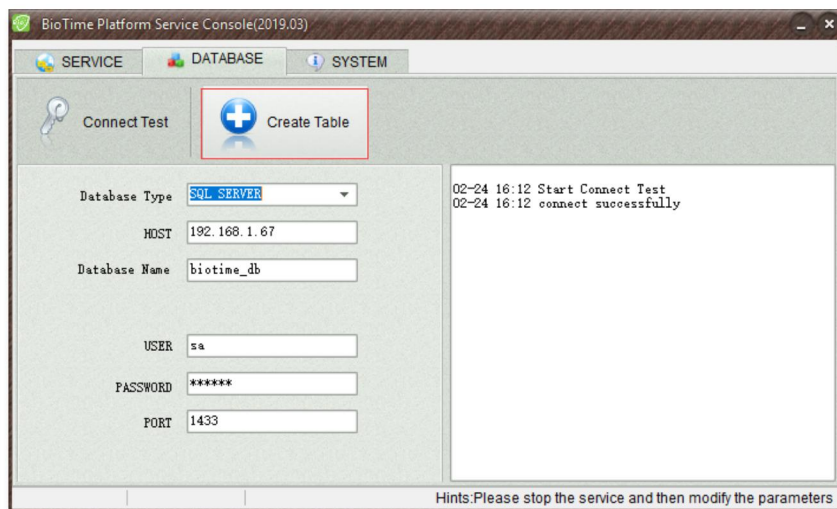
1. Under the **Database** tab, you will see the following image if you have already configured the database during installation.



2. If you have not configured the database during installation, you need to select the desired database and enter the correct parameters then click **Connect Test**. It will display "Connect Successfully" if the connection was made successfully.



3. Click **Create Table** and once it is successful, it will display "Connect Successfully."



License Information

1. Under the *System* tab, you will find the license information of the software.

ZK Building, Wuhe Road, Gangtou, Bantian, Buji Town,
Longgang District, Shenzhen China 518129

Tel: +86 755-89602345

Fax: +86 755-89602394

www.zkteco.com

