

### INSTALLATION AND SETUP GUIDE

#### GENERAL INFORMATION

The 6150RF Keypad/Transceiver is a combination unit incorporating a normally-open relay output and the functions of:

- 6150 Fixed Addressable Keypad
- 5881M RF Receiver
- 5800TM Transmitter Module

The 6150RF Keypad/Transceiver may be used on any control panel that supports the 6150 Keypad.

#### Wireless Features

The 6150RF supports the following:

- 5828/5828V wireless keypads.
- Up to eight wireless keys locally (programmed directly into 6150RF) without occupying any zones supported by the control panel.
- Button-type transmitters (e.g., 5804, 5804BD) for local operation.
- A maximum of 16 transmitters programmed into any 5800 Series-supported control panel.
- Wireless keys with high-security (e.g., 5804E).
- RF jam detection when the receiver is enabled.
- Low-battery indications for the local wireless keys.
- A nominal range of 200' for the RF transmitters (some transmitters have a shorter range).
- Wireless keys for control panels that do not support RF themselves (such as 4110DL).
- Sends status signals (Armed, Ready, etc.) to bi-directional units such as 5804BDV and 5828/5828V.



The 5802, 5802MN, 5802MN2, 5804, 5804BD, 5804BDV, 5804E, 5814, 5816TEMP, 5819, 5819BRS, 5819WHS, 5828/5828V and 5850 transmitters are not intended for UL installations.

#### Programming Features

- Auto Enroll mode for programming wireless keys.
- Provides a method for deleting a serial number and re-enrolling a new one in its place.
- Provides default settings for the wireless key functions.

#### Additional Features

- Operates the on-board relay in conjunction with the receiver (e.g., to trip a garage door opener).



This feature is not intended for UL installations.

- Activates relays programmed into the control panel.
- Provides an End User mode to enable/disable local wireless keys (e.g., if a user accidentally loses a wireless key). Refer to the 6150RF User Guide for this procedure.

#### INSTALLING THE 6150RF

Locate the 6150RF in an area and at a height where it is convenient for user operation. The 6150RF must be at least 10 feet from the control panel to ensure proper operation of the RF receiver. Perform the following steps to install the 6150RF.

1. Push the two case release snaps at the bottom of the keypad with the blade of a medium screwdriver (this will push in the release snap), then pull that side of the case back away. Insert the screwdriver in the side of the keypad (between the front and back case) and gently twist to release the side locking tab. Repeat for the other side. Refer to Figure 1 for location of the case back release snaps and locking tabs.
2. Route the wiring from the control panel through the opening in the case back. (See the control panel's instructions for proper wire run lengths.)
3. Mount the case back directly to a wall or electrical gang box.
4. Connect the power and data wires from the control panel to the terminals on the 6150RF as indicated in the wiring table adjacent to Figure 2.

5. Connect the wires for the relay output (if used) to the terminals on the 6150RF's PC board.
6. Reattach the keypad to its case back.

**Note:** Upon power-up or exit of the Program Mode, the 6150RF alternately flashes "Ad" and the 2-digit keypad address and the 2-digit receiver address on the display. Press any key to display the system status.

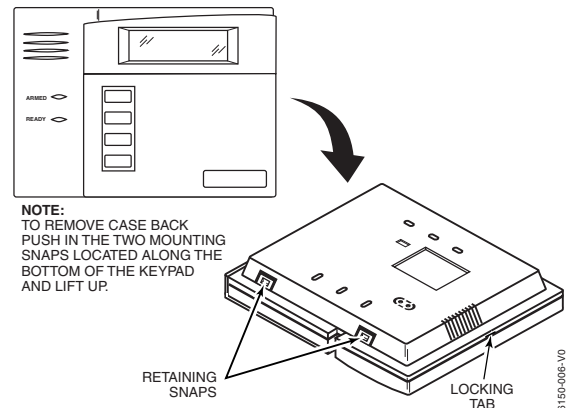


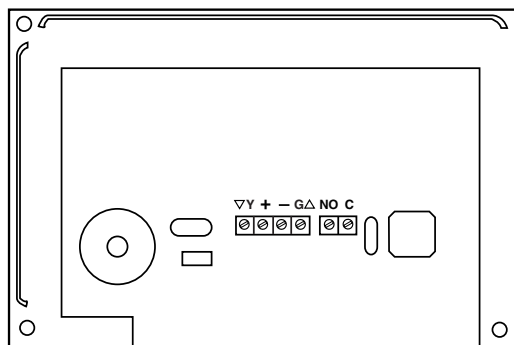
Figure 1 – Removing the 6150RF Case Back

6150-006-V0

### WIRING TABLE

Keypad	Control Panel	Wire Color
▲G	Data In	Green
-	- Aux Pwr (GND)	Black
+	+ Aux Pwr	Red
▼Y	Data Out	Yellow

**Note:** NO (normally Open) and C (common) are the connections for the relay output



6150RF-003-V2

**Figure 2 - 6150RF Wiring Connections**

### APPLICATION GUIDELINES

Use the following guidelines when planning an installation:

- Local wireless keys (wireless keys programmed directly into the 6150RF) may be used regardless of whether the RF receiver in the 6150RF is enabled or disabled.
- If using bi-directional devices, be sure to enable the transmitter module in the 6150RF.
- If transmitters are programmed into the control panel, be sure to enable the receiver. (Make sure you do not exceed the number of receivers supported by the control panel.)
- If a local wireless key is programmed to arm/disarm or to trigger a relay on the control panel, a user code must be entered into the 6150RF. This user code must also be programmed into the control panel.
- You must set the House ID only if you are using RF keypads and/or bi-directional devices; **AND** the House ID Source is the 6150RF (Local).

### 6150RF Application Guide

The following guide outlines how to program the wireless keys, RF receiver, and the House ID in the 6150RF for your installation.

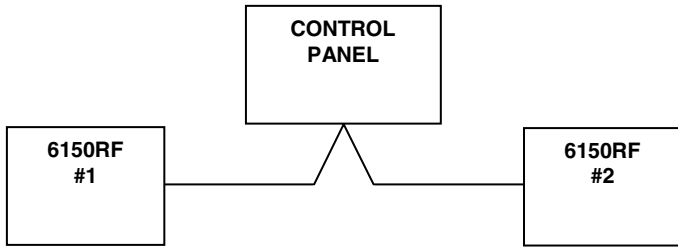
System Control Panel	Are you using			Program Wireless Keys Into	6150RF Programming Options	
	RF keys beyond system's capacity?	RF receivers beyond system's capacity?	RF keypads and/or Bi-directional devices on more than 1 partition?		Receiver Enable	House ID Source***
4110DL, 4110XM, 4140XMP, VISTA-20HWSE	N/A	N/A	N/A	6150RF	OFF	Local [0]
VISTA-10P, VISTA-10SE, VISTA-15, VISTA-15P, VIA-30PSE	NO	NO	N/A	System	ON [1]	System [1]
	YES	NO	N/A	6150RF	ON [1]	System [1]
	YES	YES	N/A	6150RF	OFF [0]	Local [0]
VISTA-20SE, VISTA-20P	NO	NO	NO	System	ON [1]	System [1]
	YES	NO	NO	6150RF	ON [1]	System [1]
	YES	YES	NO	6150RF	OFF [0]	Local [0]
	NO	YES	YES*	System	OFF [0]	Local [0]
	YES	YES	YES*	6150RF	OFF [0]	Local [0]
VISTA-40, VISTA-50P, VISTA-128B, VISTA-128BP	NO	NO	NO**	System	ON [1]	System [1]
	YES	NO	NO**	6150RF	ON [1]	System [1]
	YES	YES	NO**	6150RF	OFF [0]	Local [0]
	NO	YES	YES	System	OFF [0]	Local [0]
	YES	YES	YES	6150RF	OFF [0]	Local [0]

\* Two 6150RFs are needed for this application: one assigned to partition 1 and one assigned to partition 2.

\*\* If using an RF keypad on only one partition, the 6150RF's partition assignment in panel programming must match the partition.

\*\*\* If set for Local on a partition control, the 6150RF's partition assignment must match the one programmed in the BD device.

An example of an installation using two 6150RF Keypad/Transceivers with 2-Way Wireless Devices (e.g., 5828V) on Two Partitions is shown below:



Settings	6150RF #1	6150RF #2
<b>Keypad:</b>	Must be assigned to Partition 1 in the control panel	Must be assigned to Partition 2 in the control panel
<b>House ID:</b>	Match Partition 1 House ID in the control panel and House ID in Wireless Device	Match House ID in Wireless Device
<b>House ID Source:</b>	System	Local
<b>Receiver Enable:</b>	On	Off
<b>Transmitter Enable:</b>	On	On

### PROGRAMMING THE 6150RF

The 6150RF is shipped with pre-programmed default values. Later in these instructions are diagrams showing the wireless keys' loops and their default functions. Regardless of which wireless key you use (even if it is one not shown), loops 1-4 are defaulted for all eight devices as

Program Address	Description	Display	Choices	Default
1	Keypad Address	cA	01-31	31
2	Receiver Address	rA	00-30	00
3	House ID	HI	01-31	10
4	House ID Source	hS	1 = System 0 = Local	1 System
5	Wireless Key Editing	d-	Enter Existing Device Number	
6	Receiver Enable	rE	1 = On 0 = Off	1 Enable
7	Transmitter Module Enable	tE	1 = On 0 = Off	1 Enable
8	Wireless Key Auto Enroll	d*	Enter Serial Number	
8 then 2	Wireless Key User Code	u4	Enter 4-Digit User Code	
8 then 4	Wireless Key Loop Function	Ln	Enter Loop Number then Function (See <i>Wireless Key Function Chart</i> )	Loop 2 1 (Disarm) Loop 3 2 (Arm Away) Loop 4 3 (Arm Stay)
8 then 5	Wireless Key On-Board Relay Assignment	o-	Enter Loop Number then Relay Action	Loop 1 Close for 2 Seconds
9	Restore Defaults	EE	1 = Restores Defaults Any Other Key = Does Not Restore Defaults	
0	High Security Modet	En	1 = Enable; 0 = Disable	0 Disable

\* The keypad will display the next number that can be enrolled (i.e., "d3")

shown. These values may be changed to suit the installation.

### Entering Program Mode

Press the [1] and [3] keys simultaneously for a few seconds; within 30 seconds after applying power. The keypad beeps three (3) times, and two dashes and two zeroes flash alternately in the upper left-hand corner of the display. If any other numbers or letters flash in the display, press the [\*] key.

**Note:** The keypad will not enter programming mode if the system has been armed before the 6150RF was powered up or down.



Pressing the [1] and [3] keys **30 seconds or more after** applying power allows you to enter the **User mode**. This mode allows you to enable and disable individual local wireless keys (useful if, e.g., a user accidentally loses a wireless key). Refer to the User Guide for instructions.

### Programming Operations

Once you have entered the Program mode, you may move to any program address simply by entering the program address number. The 6150RF will automatically exit the Program mode if no keys are pressed for 90 seconds. While in the Program mode:

- Pressing the [\*] key stores the information displayed, then moves you to the next prompt, and the keypad beeps twice.
- Pressing the [#] key erases the current information and moves you back so you may enter the correct information.

Enter a program address (e.g., press [1] for Keypad Address; [2] for Receiver Address) to set the parameters in the 6150RF. The following chart lists the program addresses, the keypad display, and the choices.



† When operating the system in High-Security mode, non-encrypted wireless keys will **not** function.

## Defaulting the 6150RF

To restore the 6150RF to the default values, perform the following steps:

Step	Action
1	Enter the Program mode by pressing the [1] and [3] keys simultaneously for a few seconds within 30 seconds after applying power. The keypad alternately flashes "oo" and two dashes.
2	Press the [9] key. The display flashes "EE."
3	Press the [1] key to restore the default values, or press any other key to exit without restoring the default values. If you pressed [1], the keypad beeps three (3) times and returns to alternately flashing "oo" and two dashes. If you pressed any other key, the keypad will beep two (2) times, and return to alternately flashing "oo" and two dashes.
4	Press [*] to exit the 6150RF Program mode.

### Programming Procedure

This section is divided into two parts.

- **Programming for an installation WITHOUT local wireless keys.**
- **Programming for an installation WITH local wireless keys.**

Using the programming procedure **WITH local wireless keys**, is necessary only if you plan to use wireless keys beyond the control panel's capacity, or on a system that does not support 5800 Series wireless. Refer to the 6150RF Application Guide on page 1 for installations that require these settings.

**Note:** See the control panel's installation instructions for the acceptable keypad and receiver addresses.



If you are using a wireless key in High-Security mode (5804E) in the control panel, it will occupy one of the devices in the 6150RF.

### Programming for an Installation WITHOUT Local Wireless Keys

To program the 6150RF for an installation without any local wireless keys, perform the following steps:

Step	Action	Display
1.	Enter the Program mode by pressing the [1] and [3] keys simultaneously for a few seconds within 30 seconds after applying power or within 30 seconds after removing the case back.	Alternately flashes "oo" and two dashes.
2.	Enter [1] (Keypad Address). Enter the 2-digit keypad address (01-31). Press the [*] key to continue.	Alternately flashes "cA" and the 2-digit keypad address.
3.	Enter [2] (Receiver Address). Enter the 2-digit receiver address (00-30). Press the [*] key to continue.	Alternately flashes "rA" and the 2-digit receiver address.
4.	Enter [4] (House ID Source). Enter [1] (System) to use the House ID programmed into the control panel, if RF keypad(s) and/or bi-directional device(s): <ul style="list-style-type: none"> <li>• Are used on the control panel.</li> <li>OR</li> <li>• Neither is used.</li> </ul> Enter [0] (Local) to use the House ID programmed into the 6150RF (Program Address 3). <b>Note:</b> If the House ID Source is: <ul style="list-style-type: none"> <li>• <b>System (1)</b>, RF keypad and bi-directional units <b>MUST</b> match the House ID programmed into the control panel.</li> <li>• <b>Local (0)</b>, RF keypad and bi-directional units <b>MUST</b> match the House ID programmed into the 6150RF.</li> </ul> Press the [*] key to continue.	Alternately flashes "hS" and either "1" or "0."
5.	Enter [6] (Receiver Enable). Enter [1] to enable, or [0] to disable. Enable the receiver if RF transmitters or wireless keypads are programmed into the control. <b>Note:</b> Make sure the number of receivers set for Enable (1) does not exceed the capacity of the control panel. Press the [*] key to continue.	Alternately flashes "rE" and either "1" or "0."
6.	Enter [7] (Transmitter Module Enable). Enter [1] to enable, or [0] to disable. Enter [1] if bi-directional devices are being used. <b>Note:</b> If the House ID Source is System and more than one 6150RF is used, make sure each of the keypads have the Transmitter Module enabled. See Note under <b>House ID Source</b> step 4. Press the [*] key.	Alternately flashes "tE" and either "1" or "0."

Step	Action	Display
7.	Enter [0] (High-Security Mode). To put the system into High-Security mode, enter [1]. Enter [0] to disable.	En
8.	Press the [*] key to exit the 6150RF Program mode.	"READY" or "NOT READY"

**Note:** This is all the 6150RF programming necessary for this application. Upon exiting the Program mode, the 6150RF alternately flashes "Ad," the 2-digit keypad address, and the 2-digit receiver address. If either of these is incorrect, repeat steps 1 through 3.

### Programming for an Installation WITH Local Wireless Keys



- The 6150RF is supplied with default settings for the functions of the wireless keys. See page 3.
- If, during the programming of the wireless keys, you make a wrong entry and want to reprogram a wireless key, simply press the [#] key, then enter the correct information.

Perform steps 1-6 in the *Programming for an Installation Without Local Wireless Keys* section. Then perform the following steps:

Step	Action	Display
1.	Enter [3] (House ID). Enter the 2-digit House ID for the 6150RF (01-31). <b>Note:</b> The House ID is needed only if RF keypads and/or bi-directional units are used and House ID source is set for Local. The House ID entered here <b>MUST</b> match the House ID programmed in the RF keypad and the bi-directional unit. Press the [*] key to continue.	Alternately flashes "hl" and a 2-digit number.
2.	Enter [8] (Wireless Key Auto Enroll). The 6150RF automatically advances to first available device number. <b>Note:</b> If all 8 devices have been enrolled, the 6150RF beeps three times and continues to alternately flash "oo" and "--."	Flashes "d" with the next available device number; followed by "- -" (four times) and then repeats the sequence.
3.	Press any button on the wireless key to enroll the serial number. The keypad will beep three times. <b>Note:</b> If enrolling a wireless key (5804E) in high-security mode, press all four buttons on the wireless key simultaneously.	Alternately flashes "d" with the device number and the serial number.
4.	Press the [*] key to accept the serial number; OR press the [#] key to reject the serial number. If you accept the serial number, the 6150RF beeps two times. If you reject the serial number, the 6150RF beeps once and returns to the "enroll serial number" prompt. <b>Note:</b> A maximum of 8 wireless keys may be enrolled into the 6150RF. These wireless keys <b>DO NOT</b> occupy any zones supported by the control. If you are finished programming for now, press [*] to exit. Otherwise, continue with step 5.	If you accept the serial number, the display flashes the device number and a hyphen. If you reject the serial number, the display flashes "d" with the device number followed by "--" four times.
5.	Enter [2] (User Code). Enter the 4-digit user code for the wireless key. <b>Note:</b> The user code must be a valid code that is programmed in the control panel. Press the [*] key to accept the user code. If you are finished programming for now, press [*] to exit. Otherwise, continue with step 6.	Flashes "u4." Once the 4-digit user code is entered, the display flashes "u4," the first two digits, and then the last two digits of the user code.
6.	Enter [4] (Loop Functions). Enter the loop number (1-4). <b>Note:</b> The 6150RF is shipped with the loop functions pre-programmed. Perform steps 6 through 10 only if it is necessary to change any of the loop functions. Loop 1 Close the 6150RF On-Board Relay for 2 sec. Loop 2 1 (Disarm) Loop 3 2 (Arm Away) Loop 4 3 (Arm Stay) See the Wireless Key Function Chart below for the choices.* * Entering a number other than the one specified may give unpredictable results	Flashes "Ln." Once the loop number is entered, alternately flashes "L" with the loop number; and the present function.

Step	Action	Display																								
6. (Cont'd)	<p><b>Wireless Key Function Chart</b></p> <table border="1"> <thead> <tr> <th>Function</th> <th>Entry</th> </tr> </thead> <tbody> <tr> <td>Disarming</td> <td>1</td> </tr> <tr> <td>Arming Away</td> <td>2</td> </tr> <tr> <td>Arming Stay</td> <td>3</td> </tr> <tr> <td>Arming Maximum (Away Instant)</td> <td>4</td> </tr> <tr> <td>Arming Instant</td> <td>7</td> </tr> <tr> <td><b>Panic Alarm</b> <i>Produces type of alarm [* &amp; #] programmed in control panel.</i></td> <td># + 99</td> </tr> <tr> <td>Manually Start a Relay Action</td> <td># + 7 (VISTA-10SE, VIA-30PSE) # + 7 + n (VISTA-10P, VISTA-15P, VISTA-20P, VISTA-20SE(HW))</td> </tr> <tr> <td>Manually Stop a Relay Action</td> <td># + 8 (VISTA-10SE, VIA-30PSE) # + 8 + n (VISTA-10P, VISTA-15P, VISTA-20P, VISTA-20SE(HW))</td> </tr> <tr> <td>Activate Relay as Programmed in Control</td> <td># + 71 (VISTA-40, VISTA-50P, VISTA-128B)</td> </tr> <tr> <td>Activate Relay as Programmed in Control</td> <td># + 72 (VISTA-40, VISTA-50P, VISTA-128B)</td> </tr> <tr> <td>Activate Access Control Relay for Partition</td> <td>0 (VISTA-40, VISTA-50P, VISTA-128B)</td> </tr> </tbody> </table> <p>n = Device Number programmed in panel to be controlled Press the [*] key.</p>	Function	Entry	Disarming	1	Arming Away	2	Arming Stay	3	Arming Maximum (Away Instant)	4	Arming Instant	7	<b>Panic Alarm</b> <i>Produces type of alarm [* &amp; #] programmed in control panel.</i>	# + 99	Manually Start a Relay Action	# + 7 (VISTA-10SE, VIA-30PSE) # + 7 + n (VISTA-10P, VISTA-15P, VISTA-20P, VISTA-20SE(HW))	Manually Stop a Relay Action	# + 8 (VISTA-10SE, VIA-30PSE) # + 8 + n (VISTA-10P, VISTA-15P, VISTA-20P, VISTA-20SE(HW))	Activate Relay as Programmed in Control	# + 71 (VISTA-40, VISTA-50P, VISTA-128B)	Activate Relay as Programmed in Control	# + 72 (VISTA-40, VISTA-50P, VISTA-128B)	Activate Access Control Relay for Partition	0 (VISTA-40, VISTA-50P, VISTA-128B)	<p><b>Default Loop Functions</b></p> <p><b>NOTE:</b> If the loop is defaulted with a function (e.g., Arm, Disarm) and also is assigned to activate the on-board relay, the system performs BOTH functions.</p>
Function	Entry																									
Disarming	1																									
Arming Away	2																									
Arming Stay	3																									
Arming Maximum (Away Instant)	4																									
Arming Instant	7																									
<b>Panic Alarm</b> <i>Produces type of alarm [* &amp; #] programmed in control panel.</i>	# + 99																									
Manually Start a Relay Action	# + 7 (VISTA-10SE, VIA-30PSE) # + 7 + n (VISTA-10P, VISTA-15P, VISTA-20P, VISTA-20SE(HW))																									
Manually Stop a Relay Action	# + 8 (VISTA-10SE, VIA-30PSE) # + 8 + n (VISTA-10P, VISTA-15P, VISTA-20P, VISTA-20SE(HW))																									
Activate Relay as Programmed in Control	# + 71 (VISTA-40, VISTA-50P, VISTA-128B)																									
Activate Relay as Programmed in Control	# + 72 (VISTA-40, VISTA-50P, VISTA-128B)																									
Activate Access Control Relay for Partition	0 (VISTA-40, VISTA-50P, VISTA-128B)																									
7.	Repeat step 6 for the rest of the loops of the wireless key.																									
8.	To program a button on the wireless key to control the on-board relay, enter [5] (On-Board Relay Assignment).	Flashes "o-."																								
9.	Enter the loop number of the wireless key (1-4). Enter the relay action (0 = no action; 1 = relay off; 2 = relay on; 3 = relay toggles on and off; 4 = relay closes for 2 seconds). <b>Note:</b> The relay action must be "0" for UL installations. Press the [*] key.	Flashing "o" and the loop number. Once the action is entered, displays "o" and alternately flashes the loop number and the relay action.																								
10.	Repeat step 9 for the rest of the loops.																									
11.	When all loops have been programmed for the wireless key, press the [*] key.	Flashes "d" followed by the device number.																								
12.	The 6150RF automatically displays the next available device number (one that does not have a serial number). If you want to program additional wireless keys, repeat steps 3 through 10. Otherwise, press the [#] key. This takes you back to the main display, which alternately flashes "oo" and "-."																									
13.	Enter [0] (High Security Mode). To put the system into High-Security mode, enter [1]. Enter [0] to disable.	Flashes "En" and "0" alternately OR "En" and "1" if the keypad is in high-security mode																								
14.	Press [*] to exit the 6150RF Program mode.																									

**Note:** Upon exiting the Program mode, the 6150RF alternately flashes "Ad," the 2-digit keypad address, and the 2-digit receiver address. If either of these is incorrect, repeat steps 1 through 3 in the *Programming for an Installation Without Local Wireless Keys* section.

### Deleting, Replacing, or Editing Wireless Keys

Use the following procedure to delete, replace, or change any of the programming for a wireless key.

Step	Action	Display
1.	Enter the Program mode by pressing the [1] and [3] keys simultaneously for a few seconds within 30 seconds after applying power.	Alternately flashes "oo" and two dashes.
2.	Enter [5] (Wireless Key Editing). Enter the device number for the wireless key you want to edit. This must be a device that has its serial number programmed in the 6150RF already. To delete the serial number, press [*], then press [9], and press [*] again. To exit without deleting the serial number, press the [#] key. Press the [*] key to continue.	Flashes the device number and a hyphen. Once the device number is entered, alternately flashes "d" with the device number; and the serial number.

Step	Action	Display
3.	To change any of the programming for the wireless key, perform one of the following steps in the <i>Programming for an Installation WITH Local Wireless Keys</i> section. <ul style="list-style-type: none"> <li>For the user code, perform step 5.</li> <li>For the loop functions, perform steps 6 and 7.</li> <li>For the on-board relay assignment, perform steps 8 to 10.</li> </ul>	Alternately flashes "d*" with the device number; and "--."
4.	When you have completed editing the wireless keys, press the [*] key twice to exit the Program mode.	

\* The keypad will display the last number that was enrolled (i.e., "d3")

**Note:** Upon exiting the Program mode, the 6150RF alternately flashes "Ad," the 2-digit keypad address, and the 2-digit receiver address. If either of these is incorrect, repeat steps 1 through 3 in the *Programming for an Installation Without Local Wireless Keys* section.

## TROUBLESHOOTING

The following error messages cause the 6150RF to produce rapid beeps for 5 seconds. The table below describes the error messages and the corrective actions.

Display	Probable Cause	Corrective Action
<b>Lb</b>	Low battery in the wireless key	1. Replace the battery if the wireless key has a replaceable battery. 2. Replace the transmitter if the wireless key does not have a replaceable battery.
<b>OC</b>	Open circuit	Verify that the Data Out wire is connected properly.
<b>1C</b>	Incompatible connection	Verify that the control panel is not a First Alert-type control panel.
<b>Check 09 OR Check 100 RF Receiver OR Check 10n RF Receiver*</b>	1. 6150RF Receiver is not communicating 2. Another device on the keypad terminals is not communicating to the control panel	1. Verify that the Data In wire is connected properly. 2. Verify the wiring connections between the control and all other devices.
<b>E8</b>	Too many RF zones programmed	Verify the number of transmitters programmed into the control panel

\*n = receiver address programmed in VISTA control panel

## SPECIFICATIONS

**Physical:** 6-1/4" H x 4-7/8" W x 1" D  
(158.75mm x 123.8mm x 25.4mm)

**Wiring:** Refer to Wiring Table on page 2

**Range:** 200' nominal

**Frequency:** 345 MHz

**Voltage:** 12VDC

**Current:** Standby 80mA  
Backlighting on and  
Sounder on 105mA

**Relay:** Normally-Open, 1A, 28VDC

**Sounder:** Piezo-electric (fire alarm is loud pulsing tone;  
burglary/audible panic alarm is two tone  
sound)

**FOR DETAILS ON THE LIMITATIONS OF THE ENTIRE ALARM SYSTEM, REFER TO THE INSTALLATION INSTRUCTIONS FOR THE CONTROL PANEL WITH WHICH THIS DEVICE IS USED.**

This device complies with Part 15 of the FCC rules. Operation is subject to the following two conditions: (1) This device may not cause harmful interference, and (2) This device must accept any interference received, including interference that may cause undesired operation.

**FEDERAL COMMUNICATIONS COMMISSION (FCC) Part 15 STATEMENT**

This equipment has been tested to FCC requirements and has been found acceptable for use. The FCC requires the following statement for your information:

This equipment generates and uses radio frequency energy and if not installed and used properly, that is, in strict accordance with the manufacturer's instructions, may cause interference to radio and television reception. It has been type tested and found to comply with the limits for a Class B computing device in accordance with the specifications in Part 15 of FCC Rules, which are designed to provide reasonable protection against such interference in a residential installation. However, there is no guarantee that interference will not occur in a particular installation. If this equipment does cause interference to radio or television reception, which can be determined by turning the equipment off and on, the user is encouraged to try to correct the interference by one or more of the following measures:

- If using an indoor antenna, have a quality outdoor antenna installed.
- Reorient the receiving antenna until interference is reduced or eliminated.
- Move the radio or television receiver away from the receiver/control.
- Move the antenna leads away from any wire runs to the receiver/control.
- Plug the receiver/control into a different outlet so that it and the radio or television receiver are on different branch circuits.

If necessary, the user should consult the dealer or an experienced radio/television technician for additional suggestions. The user or installer may find the following booklet prepared by the Federal Communications Commission helpful: "Interference Handbook"

This booklet is available from the U.S. Government Printing Office, Washington, DC 20402.

*The user shall not make any changes or modifications to the equipment unless authorized by the Installation Instructions or User's Manual. Unauthorized changes or modifications could void the user's authority to operate the equipment.*

**LIMITED WARRANTY**

Honeywell International Inc., acting through its Security & Custom Electronics business ("Seller") 165 Eileen Way, Syosset, New York 11791, warrants its product(s) to be in conformance with its own plans and specifications and to be free from defects in materials and workmanship under normal use and service for 24 months from the date stamp control on the product(s) or, for product(s) not having a manufacturer's date stamp, for 12 months from date of original purchase unless the installation instructions or catalog sets forth a shorter period, in which case the shorter period shall apply. Seller's obligation shall be limited to repairing or replacing, at its option, free of charge for materials or labor, any product(s) which is proved not in compliance with Seller's specifications or proves defective in materials or workmanship under normal use and service. Seller shall have no obligation under this Limited Warranty or otherwise if the product(s) is altered or improperly repaired or serviced by anyone other than Honeywell factory service. Connection of any device(s) to a communicating bus of a Honeywell security system (e.g., keypad bus, polling loop) other than those manufactured or approved by Honeywell shall void this warranty. For warranty service, return product(s) transportation prepaid, to Honeywell Factory Service, 165 Eileen Way, Syosset, New York 11791. THERE ARE NO WARRANTIES, EXPRESS OR IMPLIED, OF MERCHANTABILITY, OR FITNESS FOR A PARTICULAR PURPOSE OR OTHERWISE, WHICH EXTEND BEYOND THE DESCRIPTION ON THE FACE HEREOF. IN NO CASE SHALL SELLER BE LIABLE TO ANYONE FOR ANY CONSEQUENTIAL OR INCIDENTAL DAMAGES FOR BREACH OF THIS OR ANY OTHER WARRANTY, EXPRESS OR IMPLIED, OR UPON ANY OTHER BASIS OF LIABILITY WHATSOEVER, EVEN IF THE LOSS OR DAMAGE IS CAUSED BY THE SELLER'S OWN NEGLIGENCE OR FAULT.

Seller does not represent that the product(s) it sells may not be compromised or circumvented; that the product(s) will prevent any personal injury or property loss by burglary, robbery, fire or otherwise; or that the product(s) will in all cases provide adequate warning or protection. Customer understands that a properly installed and maintained alarm system may only reduce the risk of a burglary, robbery, fire, or other events occurring without providing an alarm, but it is not insurance or a guarantee that such will not occur or that there will be no personal injury or property loss as a result. CONSEQUENTLY, SELLER SHALL HAVE NO LIABILITY FOR ANY PERSONAL INJURY, PROPERTY DAMAGE OR OTHER LOSS BASED ON A CLAIM THAT THE PRODUCT(S) FAILED TO GIVE WARNING. HOWEVER, IF SELLER IS HELD LIABLE, WHETHER DIRECTLY OR INDIRECTLY, FOR ANY LOSS OR DAMAGE ARISING UNDER THIS LIMITED WARRANTY OR OTHERWISE, REGARDLESS OF CAUSE OR ORIGIN, SELLER'S MAXIMUM LIABILITY SHALL NOT IN ANY CASE EXCEED THE PURCHASE PRICE OF THE PRODUCT(S), WHICH SHALL BE THE COMPLETE AND EXCLUSIVE REMEDY AGAINST SELLER.

This warranty replaces any previous warranties and is the only warranty made by Seller on this product(s). No increase or alteration, written or verbal, of the obligations of this Limited Warranty is authorized.



K4460-1V6 2/06 Rev B

**Honeywell**

165 Eileen Way, Syosset, New York 11791

Copyright © 2006 Honeywell International Inc.

[www.honeywell.com/security](http://www.honeywell.com/security)